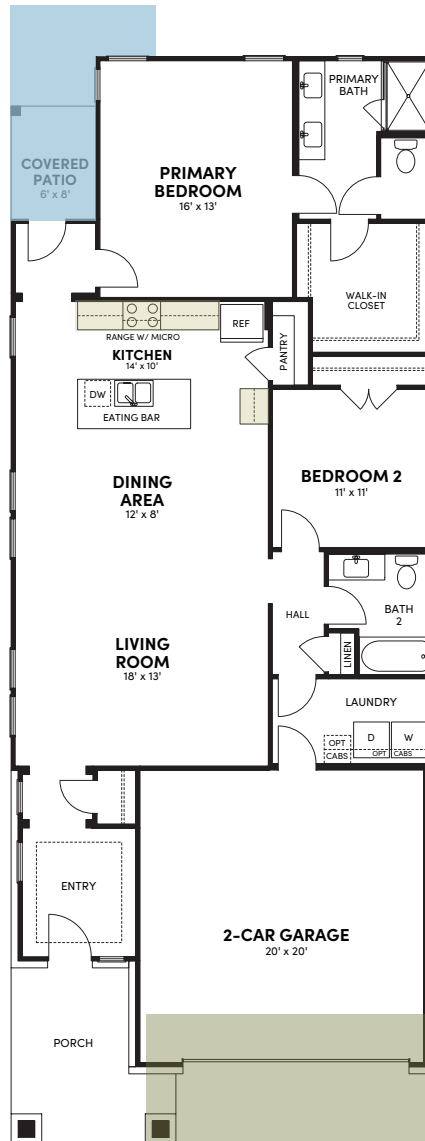


# The Newberry

Brookfield  
Residential 

## TRADITIONAL HOMES

1,562 Sq. Ft. | 2 Bedrooms | 2 Bathrooms | 2-Car Garage | 40 Ft. Lot Size | Plan #4045



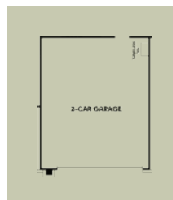
### ADDITIONAL OPTIONS:



Extended Covered  
Patio



Kitchen



Extended  
Garage



BrookfieldTX.com | 512-960-2047

The total number, layout, design and location of homes; unit mix; and the location, design and layout of recreational facilities may be changed due to a number of circumstances, including governmental requirements and market demand. Dimensions are approximate in nature and are not intended for final reference. Brookfield Residential and its affiliates reserve the right to change homesites, timelines, floor plans and home prices and make modifications in materials and specifications at any time without prior notice. © 2025 Brookfield Residential Properties ULC. All rights reserved. REV. JULY/2025

**KISSING TREE**  
SAN MARCOS ★ TEXAS

# Newberry: Elevation Options

**Brookfield**  
Residential 



**CRAFTSMAN**



**TEXAS HILL COUNTRY**



**BrookfieldTX.com | 512-960-2047**

The total number, layout, design and location of homes; unit mix; and the location, design and layout of recreational facilities may be changed due to a number of circumstances, including governmental requirements and market demand. Dimensions are approximate in nature and are not intended for final reference. Brookfield Residential and its affiliates reserve the right to change homesites, timelines, floor plans and home prices and make modifications in materials and specifications at any time without prior notice. © 2025 Brookfield Residential Properties ULC. All rights reserved. REV. JULY/2025

**KISSING TREE**  
SAN MARCOS ★ TEXAS